

## In This Issue

<b>News</b> .....	<b>1</b>
About this newsletter .....	1
Server version 10.1.0.1 available .....	1
Server version 9.5.0.9 available .....	1
Content Manager OnDemand blog .....	1
ECM at Work .....	1
Knowledge Center translated .....	1
Content Manager OnDemand for V9.0 end of support .....	2
Content Manager OnDemand for z/OS subscription and support withdrawn .....	2
<b>Tips – Cross Platform</b> .....	<b>2</b>
Update button added to Administrator client ...	2
ARXML change at V10.1 .....	2
Add an Index on Exit added to Administrator client .....	2
Logical Views and “Custom” color .....	2
PDF indexer fails with Trigger(s) not found by page 1 .....	3
<b>Tips – Multiplatforms – V10.1</b> .....	<b>4</b>
ARSLOAD case sensitive for file name extensions .....	4
Form Feed pulldown on the Indexer Properties dialog .....	4
<b>Tips – z/OS</b> .....	<b>4</b>
z/OS Quick Hits .....	4
<b>Tips – IBM i</b> .....	<b>4</b>
Start ASM command enhanced at V7.2 .....	4
OS/400 indexer enhanced at V7.2 .....	4
New document commands available at V7.2 .....	5
New indexer function for migrated reports .....	5
IBM Navigator for i enhanced .....	5
<b>Additional Information</b> .....	<b>6</b>

## News

### About this newsletter

This newsletter is designed to keep you better informed about IBM® Content Manager OnDemand on all platforms. The newsletter is published quarterly.

Previous editions of this newsletter can be found in [support item 7024130](#). They are also available on the OnDemand User Group web site under the heading '[Presentations, Newsletters, and such](#)'.

Correspondence related to this newsletter should be directed to [dbryant1@us.ibm.com](mailto:dbryant1@us.ibm.com).

This newsletter is formatted so that it is easier to read on widescreen devices. Use the full screen viewing option in Acrobat (Ctrl+L) for best results.

### Server version 10.1.0.1 available

#### Multiplatforms

The fix pack 10.1.0.1 installation files are available from [IBM Fix Central](#). This includes the OnDemand Administrator and OnDemand Client.

#### z/OS

To upgrade your system, choose the applicable PTF from the list in [support item 1260192](#).

#### IBM i

See the Information APAR for a list of the PTF numbers for your release. You should also review the corresponding Read This First document before installing the PTFs. We recommend that you order the Content Manager OnDemand for i PTF group when upgrading your system to V10.1.0.1.

Release	PTF Group	Info APAR	Read This First
V7.3	SF99252	<a href="#">II14799</a>	<a href="#">7046944</a>
V7.2	SF99251	<a href="#">II14723</a>	<a href="#">7041959</a>

Note that server version 10.1.0.1 is only available on V7.3 and V7.2.

### Server version 9.5.0.9 available

#### Multiplatforms

The fix pack 9.5.0.9 installation files are available from [IBM Fix Central](#). This includes the OnDemand Administrator and OnDemand Client.

#### z/OS

To upgrade your system, choose the applicable PTF from the list in [support item 1260192](#).

#### IBM i

See the Information APAR for a list of the PTF numbers for your release. You should also review the corresponding Read This First before installing the PTFs.

Release	PTF Group	Info APAR	Read This First
V7.1	SF99250	<a href="#">II14497</a>	<a href="#">7018085</a>

Note that server version 9.5.0.9 is only available on V7.1.

### Content Manager OnDemand blog

Do you want to keep up with the latest news about Content Manager OnDemand? Visit the [Content Manager OnDemand blog](#). The latest post, by Brian Phelps, Worldwide Sales Leader for Content Manager OnDemand, is titled 'Is Your XML actually a “Document of Record”?' This post discusses how XML is rapidly becoming the de facto standard for a wave of new documents of record, required to be archived and protected with proof of inalterability.

Other recent posts include information on why you should upgrade to Content Manager OnDemand V10.1, and the value of using analytics with Content Manager OnDemand.

### ECM at Work

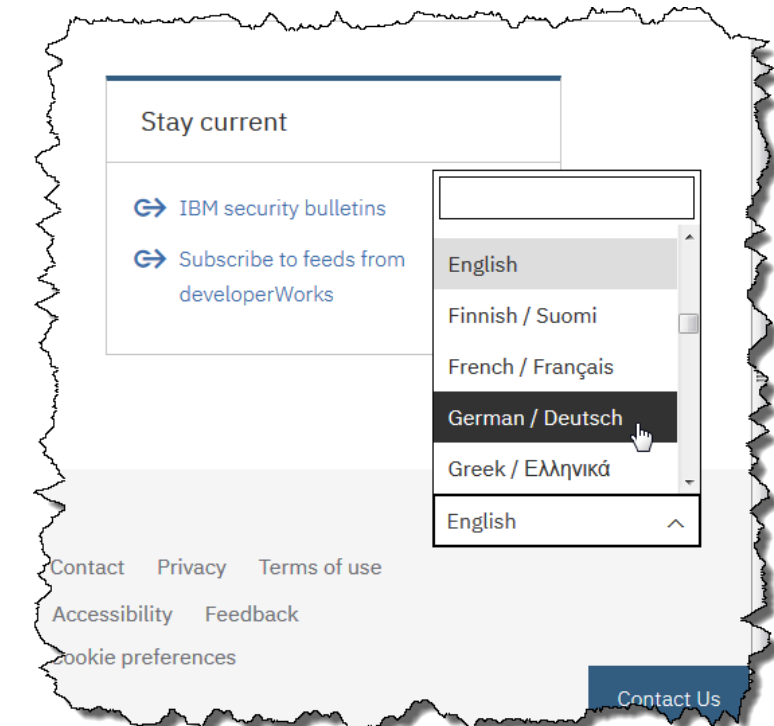
ECM at Work is a series of webcasts by IBM technical professionals. The topics include Content Manager OnDemand and other IBM Enterprise Content Management (ECM) products. Webcasts that have already take place are available [here](#).

- o ECM at Work with Content Manager OnDemand by Bud Paton, Worldwide ECM Technical Professional
- o ECM at Work with Content Navigator by Bob Nonnenkamp, Executive IT Specialist

### Knowledge Center translated

Portions of the Content Manager OnDemand Knowledge Center are translated into national languages. Recently, the Content Manager OnDemand for Multiplatforms Installation Guide and the Content Manager OnDemand for Multiplatforms Administration Guide have been translated into German.

The links we include in the Additional Information section of this newsletter will take you to the English version of the Knowledge Center. From there it is easy to navigate to the national language versions. Just scroll to the bottom of the page, then use the pull-down to select your language. Publications that have not been translated will be presented in English.



At least one Version 10.1 publication has been translated into each of these languages:

- Brazilian Portuguese
- Simplified Chinese
- Traditional Chinese
- Croatian
- French
- German
- Hungarian
- Japanese
- Korean
- Polish
- Russian
- Slovakian
- Slovenian
- Spanish

## News (continued)

### Content Manager OnDemand for V9.0 end of support

Effective on September 30, 2017, IBM will withdraw support for Content Manager OnDemand for Multiplatforms V9.0.x, 5724-J33. See IBM US announcement letter [916-117](#).

Effective on September 30, 2017, IBM will withdraw support for Content Manager OnDemand for z/OS V9.0.x, 5697-CMD. See IBM US announcement letter [916-167](#).

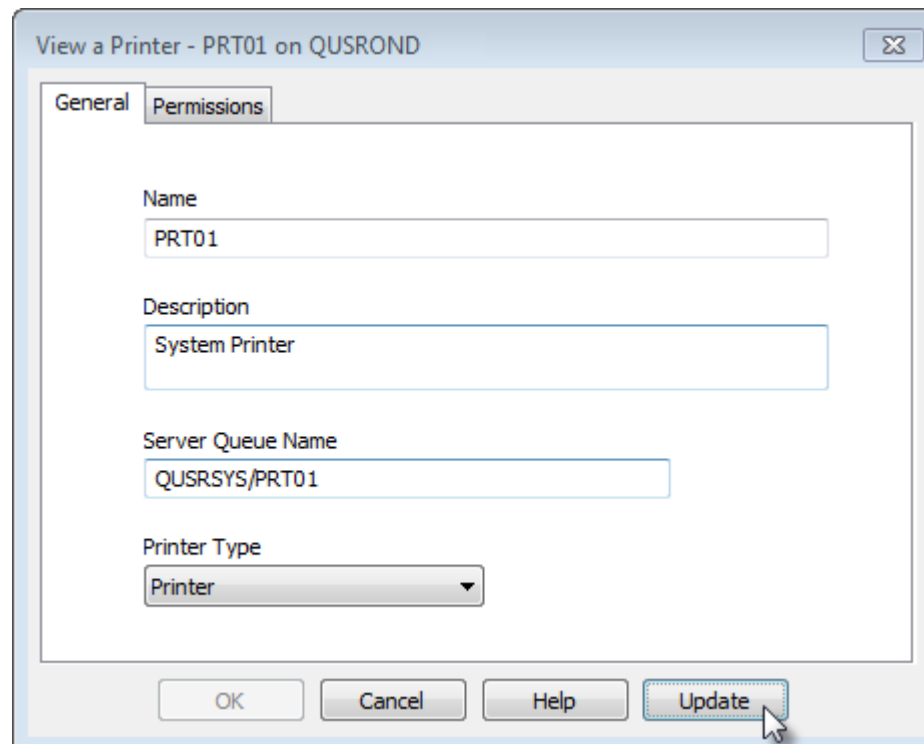
### Content Manager OnDemand for z/OS subscription and support withdrawn

Effective on September 30, 2017, IBM will withdraw Content Manager OnDemand for z/OS Subscription and Support, 5697-H80, for the AFP Transforms and PDF Indexer features only. See IBM US announcement letter [916-167](#).

## Tips – Cross Platform

### Update button added to Administrator client

An update button is added to most View dialogs at version 10.1 of the OnDemand Administrator client. The Update button enables a quick switch from View to Update mode. This support includes objects such as users, applications, application groups, folders, printers, and so on, as well as all the Content Manager OnDemand Distribution Facility (ODF) objects and the Data Distribution objects.



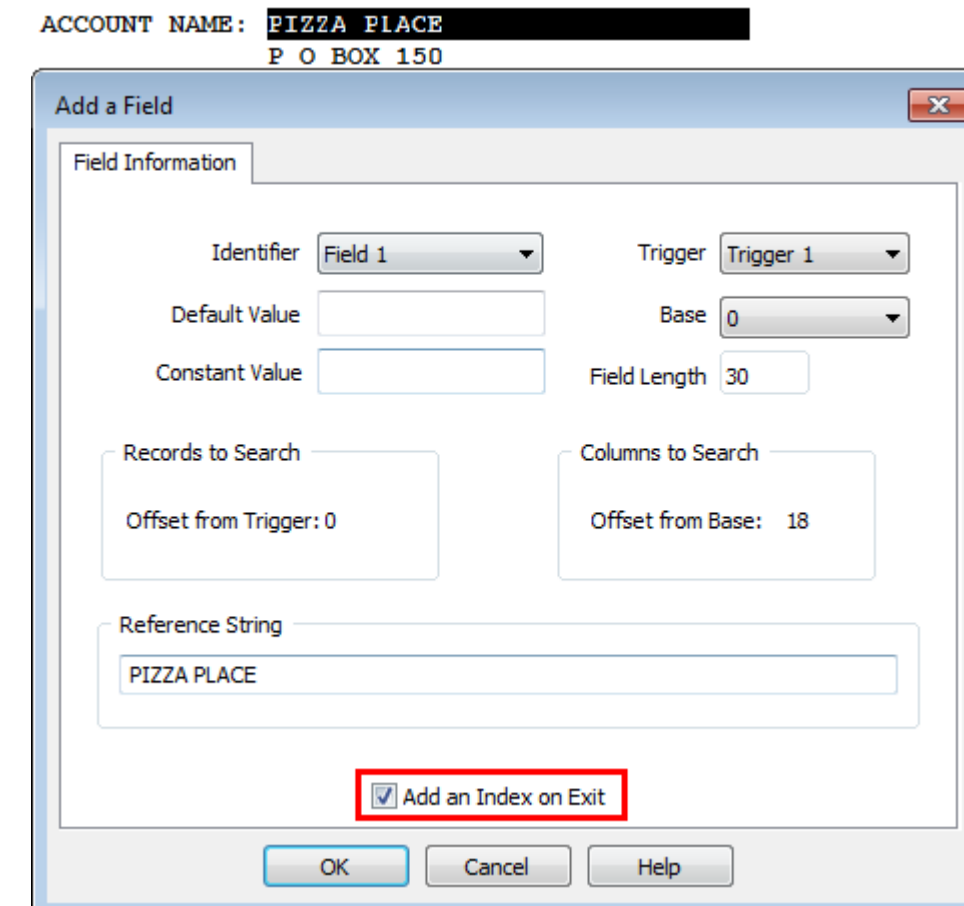
### ARSXML change at V10.1

The applicationGroup object attribute, logDBQueries, functions exactly the same as logDBQueriesBefore, both in input and output. The logDBQueries attribute is redundant and is removed from the V10.1 schema for use with ARSXML.

If your XML file contains logDBQueries="<false|true>" it should be replaced with logDBQueriesBefore="<false|true>". If your XML contains both parameters, you should remove the logDBQueries parameter.

### Add an Index on Exit added to Administrator client

A new Add an Index on Exit checkbox is available on the Add a Field dialog in version 10.1 of the OnDemand Administrator client, so that indexing parameters can be defined after a new field is defined.



When the Add an Index on Exit checkbox is checked, and you click the OK button, the Add an Index dialog is displayed.

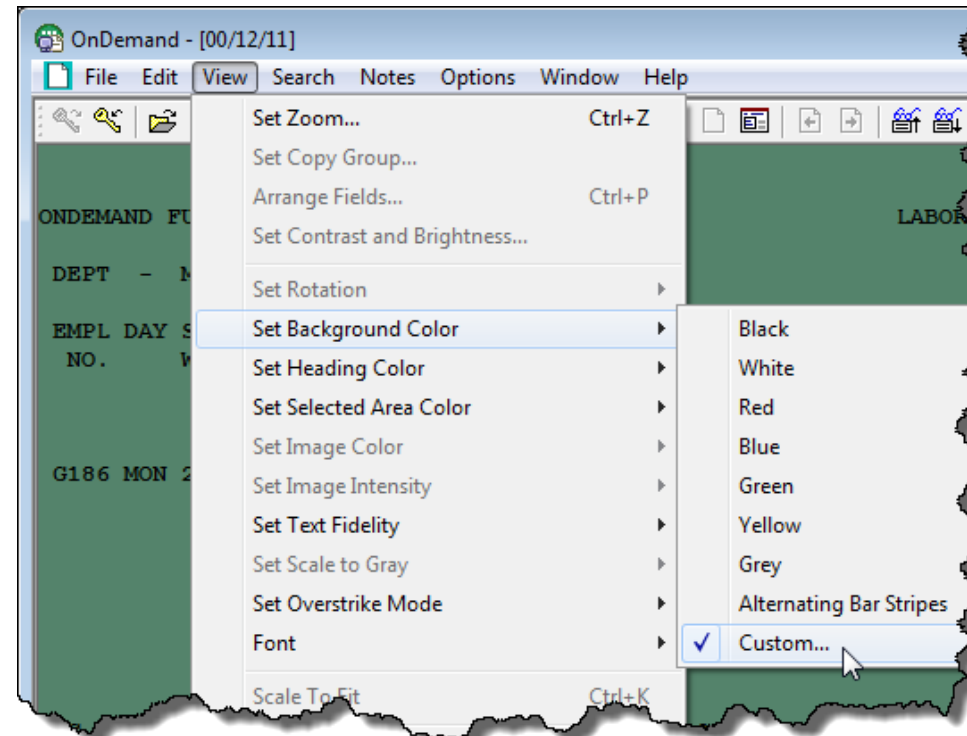
### Logical Views and “Custom” color

Questions have been asked about logical views that have 'Custom' as the color for the Background Color, Selected Area Color, or Heading Color.

The questions arose based on this scenario: A logical view was created with a 'Custom' Background Color. ARSXML was used to export the application group and the application that contained the logical view. When an attempt was made to add the application group and application using the XML file from the export command, an error message was generated that read A732RS7E A parsing error occurred in file

output.xml, Line 24, Column 214:value 'Custom' not in enumeration.

The reason for the failure is that only the OnDemand Client (the Windows GUI client for end-users) can add/update a logical view with 'Custom' as the selected color. The OnDemand Administrator client and ARSXML do not have a way to represent or update a 'customized' color because it is defined using the Custom color dialog in the OnDemand Client. The 'Custom' color doesn't just represent one specific Red/Green/Blue combination. It can represent any Red/Green/Blue combination. Specifying 'Custom' for the Background color may be different from 'Custom' that is used for the Selected Area Color.



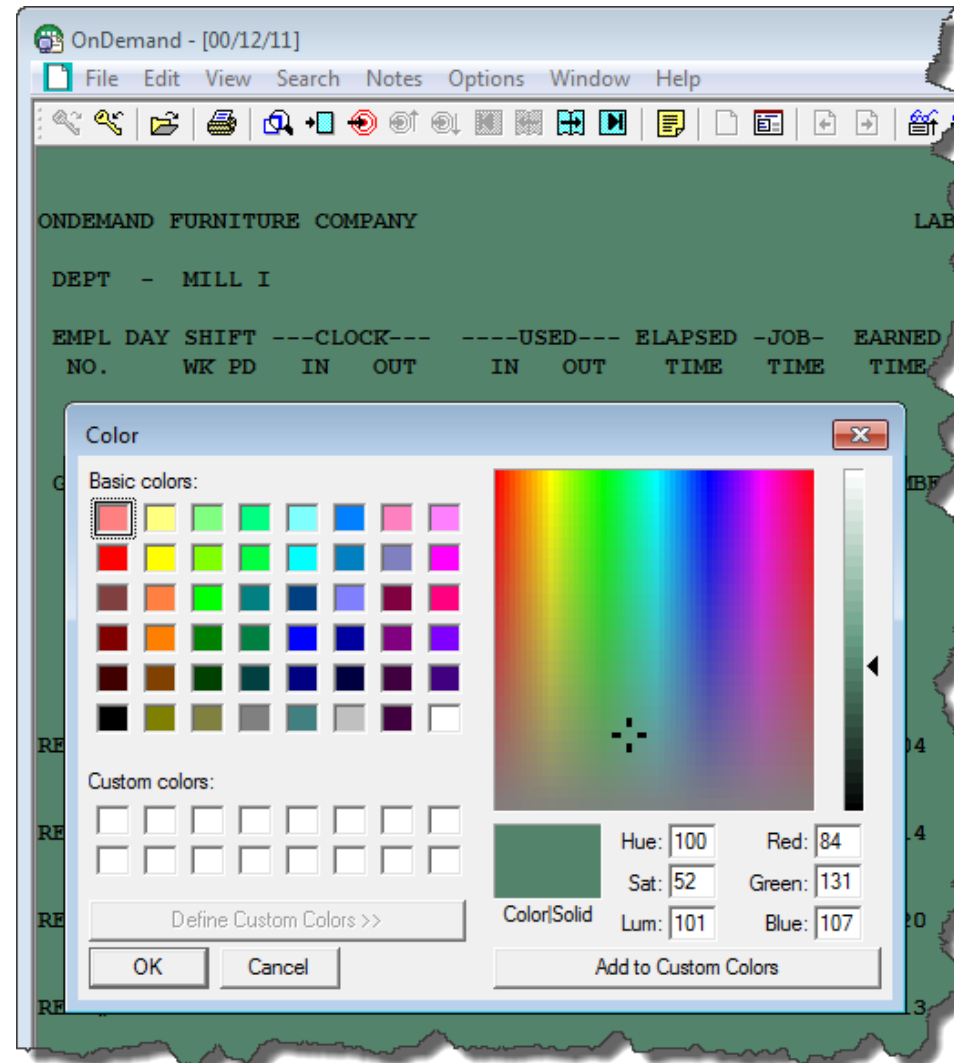
For the OnDemand Administrator client, the following rules are enforced:

- A logical view with 'Custom' as one of the color options can be updated by the OnDemand Administrator client, but if 'Custom' is changed to something other than 'Custom', it cannot be changed back.
- New logical views cannot be defined with 'Custom' as a color.
- Existing logical views cannot be updated to use 'Custom' as one of the color options.

For ARSXML, the following rules are enforced:

- New logical views cannot be defined with 'Custom' as a color.
- "Custom" cannot be in the input file if you're trying to add, update, delete, or export an application. When the input XML file is validated, it will fail because "Custom" is not defined in the ondemand.xsd file. If you want to update or delete the logical view, you'll have to first remove the attribute that has "Custom" as the color

in the input XML file. If you want to export or delete an application and a logical view with "Custom" is in the input XML file, you'll have to first remove the attribute.



## PDF indexer fails with Trigger(s) not found by page 1

Why does the PDF indexer fail with message: ARS4914E - Trigger(s) not found by page 1?

There are several causes for this error. The most common cause is that the trigger coordinates or the trigger string are not correct.

However, it is also possible to receive this message when the correct fonts are not installed on the system. Depending on the fonts used in the PDF document, the PDF libraries might need the fonts in order to properly extract the text from the document. If the text is not extracted properly, the PDF indexer is unable to find the trigger.

The PDF libraries search for fonts in the following directories on AIX, Linux, and IBM i:

- /usr/share/fonts
- /usr/lib/X11/fonts
- /usr/local/X11R6/lib/X11/fonts
- /usr/share/X11/fonts

AIX also has some other font locations such as:  
/usr/lpp/X11/lib/X11/fonts/

The PDF libraries search for fonts in the following directory on Windows:

- C:\Windows\Fonts

For this reason, you might need to install the xorg-x11-fonts-Type1 package or other font packages in order to index and load PDF documents.

For IBM i, install operating system product option 43, Additional Fonts.

If the PDF document contains Asian languages, you might need to install the Extended Asian Language font pack from Adobe.

If the directory is not automatically searched by the PDF libraries, a font directory can be explicitly specified to the PDF indexer with the FONTLIB parameter. For example:

- FONTLIB=C:\Program Files (x86)\Adobe\Acrobat 10.0\Resource\CMap (Windows)
- FONTLIB=/ars/users/pdfFonts/CMap (AIX, Linux, IBM i)

This tip adapted from support item 2007373.



## Tips – Multiplatforms – V10.1

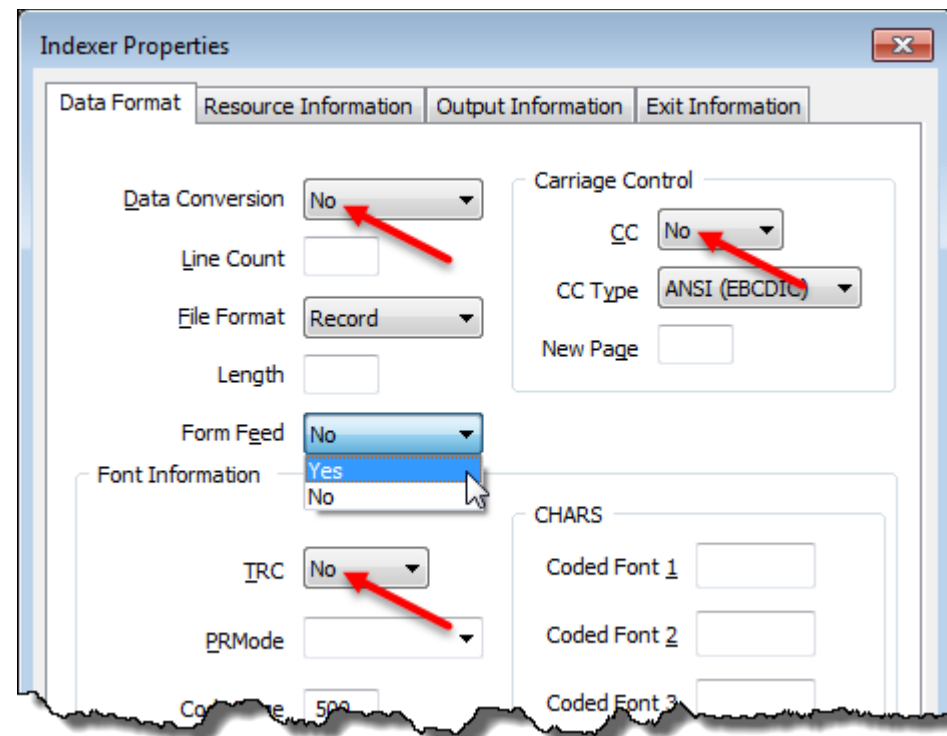
### ARSLOAD case sensitive for file name extensions

At server version 10.1, the filename extensions of .ind, .out, and .res are now case sensitive when used with the ARSLOAD program. The .ard and .pdf extensions can still be either all uppercase or all lowercase (for example, .ARD or .ard).

### Form Feed pulldown on the Indexer Properties dialog

There is a new Form Feed pulldown on the Data Format tab of the Indexer Properties dialog (Multiplatforms servers only). A new ACIF indexer parameter was added in V9.5.0.3. The new indexer parameter, FORMFEED, indicates whether form feed controls should be recognized and used to identify the start of a page during the indexing process.

Support for the new pulldown is included in the OnDemand Administrator client. The Form Feed setting is only available if Data Conversion, TRC, and CC are set to No.



## Tips – z/OS

### z/OS Quick Hits

#### Checks that all Content Manager OnDemand for z/OS users should perform

1. Run the VALIDATE utility which checks the cache file system.  
See <http://www.odusergroup.org/forums/index.php?topic=559.0> "Validating Cache Storage"
2. Run the IBM-provided tool called COPYTREE without a target file to check a file tree in Unix Systems Services for structural integrity by accessing each node.

An example to check everything under /usr/lpp:

```
//DOSTEP EXEC PGM=IKJEFT01,REGION=0M
//SYSEXEC DD DSN=SYS1.SBPXEXEC,DISP=SHR
//SYSTSPRT DD SYSOUT=*
//SYSTSIN DD *
oshe11 /samples/copytree /usr/lpp
```

Documentation on this is available by browsing /samples/copytree on your z/OS server.

#### Check your OMVS settings

As more work gets performed in the OMVS environment and as demand for system resources grows with new releases of software, ensure that you run the command D OMVS,L (display OMVS limits) on a regular basis.

Also, highly recommended is the BPXPRMxx setting of LIMMSG(ALL). Be sure to implement automation to trap any expected messages. A brief write-up is available in SYS1.SAMPLIB(BPXPRMXX).

#### DB2 or OAM upgrades - Be ready to rebind

There have been several occurrences lately where an upgrade to DB2 or OAM has necessitated a rebind. Be sure that you're notified on any ACTION HOLDS in PTFs for both the OAM and DB2 subsystems.

In the case of installing a new release of z/OS, be sure to review the z/OS Migration Guide for any OAM requirements.

When you do rebind, if your previous bind jobs were saved in a private library, ensure that all the plans and packages are included as per the latest members of SDSNINST for DB2 and the CBR%BIND jobs in SYS1.SAMPLIB.

## Tips – IBM i

### Start ASM command enhanced at V7.2

At V7.2, provided with the PTFs for server version 10.1.0.1, the Start Archived Storage Management (STRASMOND) command has a new parameter named Force ASM to end (ENDASM). This parameter is already available at V7.3. The Force ASM to end parameter specifies whether you want to force the ASM process to end, and if so, when it should end. You can force ASM to end after a specified number of hours or at a specified time. If ASM completes the movement of all eligible data before the specified ending time, it will end before the specified number of hours or end time occurs. This parameter is optional. Note that help text for the new parameters is not available on V7.2.

```
Start Archived Storage Mgmt (STRASMOND)
Policy . . . . . *ALL
Process to run . . . . . *ALL
FORCE ASM TO END . . . . . *NO *NO, *NBRHRS, *ENDTIME
Number of hours to run . . 8 1-999
Time to end . . . . . 230000 Time
```

As an example, you might use the Force ASM to end parameter to ensure that ASM ends before your nightly backup begins.

### OS/400 indexer enhanced at V7.2

In the 2<sup>nd</sup> quarter newsletter, we mentioned that the OS/400 indexer had been rewritten in server version 10.1 for improved performance and enhanced error handling. The rewritten OS/400 indexer is now available for Content Manager OnDemand for i version 7.2 at server version 10.1.0.1. In our testing, indexing times were reduced 30% to 60%, as captured in the System Load facility. Your results will vary based on your input data and system performance.

The following enhancements, first made at V7.3, are now available on V7.2:

- Regular expression support for triggers
  - A regular expression (regex) is a pattern that is used to match characters in a string.
- Regular expression support for fields
- Column range for triggers
  - You can now specify a beginning and ending column range in which to search for a trigger.
- Break on field value changes can be AND'ed
  - The BREAKYES parameter determines how the OS/400 indexer starts a new document.

See the [2<sup>nd</sup> Quarter 2016](#) issue of the OnDemand Newsletter for more details.

## New document commands available at V7.2

To make printing, querying, and retrieving archived documents easier, new commands have been added to Content Manager OnDemand for i at V7.2, server version 10.1.0.1. These commands are already available at V7.3. These commands make most of the functions of the ARSDOC PRINT, QUERY, and GET qshell commands available in easy-to-use IBM i commands. The three commands are Print Document (PRTDOCOND), Query Document (QRYDOCOND), and Retrieve Document (RTVDOCOND).

See the [2<sup>nd</sup> Quarter 2016](#) issue of the OnDemand Newsletter for more details. Note that command help text is not available on V7.2. The help text is available online in [support item 2004480](#).

## New indexer function for migrated reports

The OS/400 indexer is enhanced with additional function that can be used with reports that have been migrated from Spool File Archive. By default, all migrated reports have fields for Segment Date, Run Date, and Sequence Number. When data is loaded, these fields all use the job date to determine their value. On an IBM i server, the value of the job date is constant for as long as the job is active, and does not change at midnight.

If the job loading data into the migrated reports, by using the Start Monitor (STRMONOND) command for example, is active over midnight, all reports loaded will have the same Segment Date, Run Date, and date portion of the Sequence Number. The indexer parameters for these fields are:

```
FIELD2=X'6D5CE2C5C7C4C1E3C55C6D' /* *_SEGDATE*_ */
FIELD6=X'6D5CD9E4D5C4C1E3C55C6D' /* *_RUNDATE*_ */
FIELD7=X'6D5CE2C5D8D5E4D45C6D' /* *_SEQNUM*_ */
```

The fact that the job date does not change at midnight can sometimes cause a problem in determining the sequence in which reports were loaded, or even the day that they were loaded. To resolve this issue, the OS/400 indexer now supports the addition of the string SYSDATE to the Segment Date, Run Date, and Sequence Number indexer parameters. The addition of SYSDATE will now cause those three fields to be populated with the system date, instead of the job date.

```
FIELD2=X'6D5CE2C5C7C4C1E3C5E2E8E2C4C1E3C55C6D' /*
*_SEGDATESYSDATE*_ */
FIELD6=X'6D5CD9E4D5C4C1E3C5E2E8E2C4C1E3C55C6D' /*
*_RUNDATESYSDATE*_ */
FIELD7=X'6D5CE2C5D8D5E4D4E2E8E2C4C1E3C55C6D' /*
*_SEQNUMSYSDATE*_ */
```

This change can be made to one, two, or all three of these indexer parameters, depending on your needs.

This enhancement is available at V7.2 and V7.3 and requires the updated indexer, available at server version 10.1.0.1.

## IBM Navigator for i enhanced

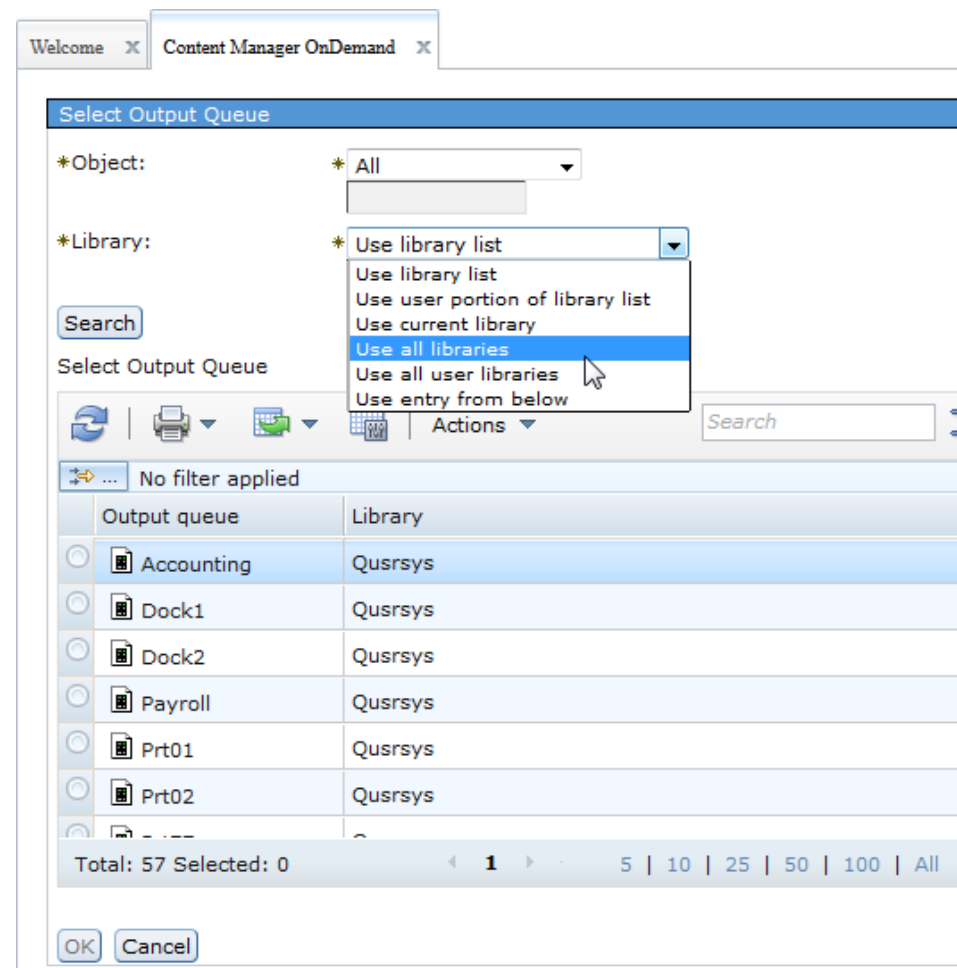
### Problem

Several panels within the Content Manager OnDemand component of IBM Navigator for i allow the user to browse for objects. Previously, there was no way to select an object from a library that is not in the initial library list for the user. The initial library list is determined by the job description of the user profile.

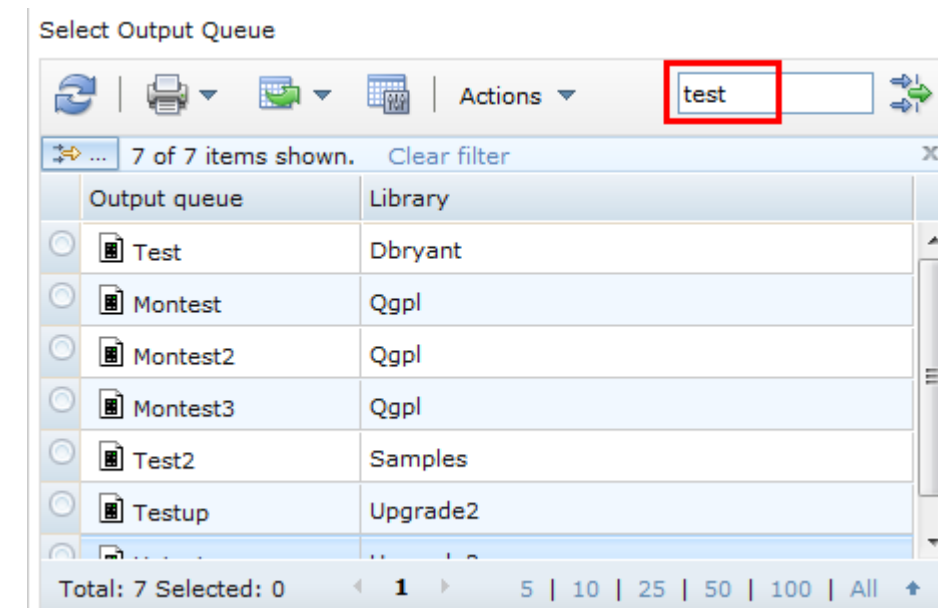
### Solution

The generic object picker used by other IBM Navigator for i components is now used by the Content Manager OnDemand component when the user browses for objects. This allows the user to easily specify a search for one or all objects based on the following library filtering:

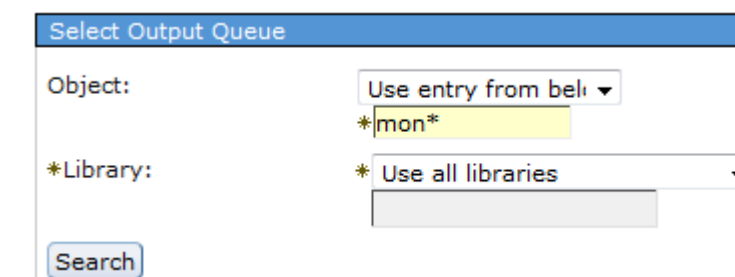
- Library list
- User portion of library list
- Current library
- All libraries
- All user libraries
- Specific library



After a list of objects has been displayed, you can filter the list by entering text in the Search box.



In addition to changing the library filtering, you can also specify a specific output queue name, or a generic output queue name before clicking the Search button, as shown below.



This enhancement is available for all V7 releases.

# Additional Information

## Knowledge Centers

Content Manager OnDemand for Multiplatforms [Knowledge Centers](#)

Content Manager OnDemand for z/OS [Knowledge Centers](#)

Content Manager OnDemand for i [Knowledge Centers](#)

## Publication Libraries - PDF versions of the documentation

Multiplatform	<a href="#">Version 9.0</a>	<a href="#">Version 9.5</a>	Version 10.1 - Use the Knowledge Center
z/OS	<a href="#">Version 9.0</a>	<a href="#">Version 9.5</a>	Version 10.1 - Use the Knowledge Center
IBM i	<a href="#">Version 7.1</a>	<a href="#">Version 7.2</a>	Version 7.3 - Use the Knowledge Center

## Product System Requirements

Multiplatform	<a href="#">Version 9.0</a>	<a href="#">Version 9.5</a>	<a href="#">Version 10.1</a>
z/OS	<a href="#">Version 9.0</a>	<a href="#">Version 9.5</a>	<a href="#">Version 10.1</a>
IBM i	<a href="#">Version 7.1</a>	<a href="#">Version 7.2</a>	<a href="#">Version 7.3</a>

## More Enterprise Content Management web sites

Content Manager OnDemand [Product Overview](#)

[Compatibility Matrix](#) for Content Manager OnDemand clients and servers

Content Navigator [Product Overview](#)

IBM Software [Support Lifecycle](#) Policies (search for Content Manager OnDemand)

## Social Media

Follow [@IBM\\_ECM](#) on twitter for almost real-time news & updates on Content Manager OnDemand. Visit the [Content Manager OnDemand blog](#) for more in depth articles. For more information and links to all social media sites, see [support item 1673183](#).

## OnDemand User Group

The primary objective of the [OnDemand User Group](#) (ODUG) is to create an environment and network encouraging the exchange and development of information regarding Content Manager OnDemand and its associated products.

## Copyright and trademark information

Linux is a registered trademark of Linus Torvalds in the United States, other countries, or both. Microsoft, Windows, and the Windows logo are trademarks of Microsoft Corporation in the United States, other countries, or both.

Java and all Java-based trademarks and logos are trademarks or registered trademarks of Oracle and/or its affiliates.

A current list of IBM trademarks is available on the Web at "[Copyright and trademark information](#)".