

## In This Issue

<b>News</b> .....	<b>1</b>
About this newsletter .....	1
Server version 10.1.0.3 available .....	1
Server version 9.5.0.11 available .....	1
PDF versions of V10.1 and V7.3 publications now available .....	1
IBM Content Manager OnDemand Education V9.5 and V10.1 updates .....	1
Upcoming IBM workshops .....	2
<b>Tips – Cross Platform – 10.1.0.3.....</b>	<b>2</b>
Image Viewer available in 64-bit client .....	2
HTML5 Line Data Viewer supports Copy page to file .....	2
ARSDOC command enhanced .....	2
ARSLSYNC now available for all platforms ...	2
Single Sign-On for IBM Content Navigator ...	2
<b>Tips – OnDemand Administrator client – 10.1.0.3</b> .....	<b>3</b>
New application columns available in the application list .....	3
Show Applications and Show Application Groups pop-up menu items for a folder .....	3
Show Applications and Show Folders pop-up menu items for an application group .....	3
Show Application Group pop-up menu item for an application .....	4
Enhancements to System Parameters Summary	4
<b>Tips – Multiplatforms</b> .....	<b>4</b>
Root and non-root installs on Unix .....	4
<b>Tips – z/OS</b> .....	<b>5</b>
z/OS Quick Hits .....	5
<b>Tips – IBM i</b> .....	<b>5</b>
What sample programs are available? .....	5
<b>Additional Information</b> .....	<b>6</b>

## News

### About this newsletter

This newsletter is designed to keep you better informed about IBM® Content Manager OnDemand on all platforms. The newsletter is published quarterly.

Previous editions of this newsletter can be found in [support item 7024130](#). They are also available on the OnDemand User Group web site under the heading '[Presentations, Newsletters, and such](#)'.

Correspondence related to this newsletter should be directed to [dbryant1@us.ibm.com](mailto:dbryant1@us.ibm.com).

This newsletter is formatted so that it is easier to read on wide screen devices. Use the full screen viewing option in Acrobat (Ctrl+L) for best results.

### Server version 10.1.0.3 available

#### Multiplatforms

The V10.1.0.3 fix pack installation files are available from [IBM Fix Central](#). This includes the OnDemand Administrator and OnDemand end-user clients.

#### z/OS

To upgrade your system, choose the applicable PTF from the list in [support item 1260192](#).

#### IBM i

See the Information APAR for a list of the PTF numbers for your release. You should also review the corresponding Read This First document before installing the PTFs. We recommend that you order the PTF group when upgrading your system to V10.1.0.3.

Release	PTF Group	Info APAR	Read This First
V7.3	SF99252	<a href="#">II14799</a>	<a href="#">7046944</a>
V7.2	SF99251	<a href="#">II14723</a>	<a href="#">7041959</a>

Server version 10.1.0.3 is available only on V7.3 and V7.2.

### Server version 9.5.0.11 available

#### Multiplatforms

The V9.5.0.10 fix pack installation files are available from [IBM Fix Central](#). Customers using the V9.5.0.10 server should use the V10.1 clients.

#### z/OS

To upgrade your system, choose the applicable PTF from the list in [support item 1260192](#).

#### IBM i

See the Information APAR for a list of the PTF numbers for your release. You should also review the corresponding Read This First before installing the PTFs. We recommend that you order the PTF group when upgrading your system to V9.5.0.11.

Release	PTF Group	Info APAR	Read This First
V7.1	SF99250	<a href="#">II14497</a>	<a href="#">7018085</a>

Server version 9.5.0.11 is available only on V7.1.

### PDF versions of V10.1 and V7.3 publications now available

PDF versions of Content Manager OnDemand for Multiplatforms and z/OS V10.1 and Content Manager OnDemand for i V7.3 publications are now available. The publication libraries that contain links to the PDF files can be found on the web at the following links:

- Content Manager OnDemand for Multiplatforms V10.1:  
<http://www.ibm.com/support/docview.wss?uid=swg27051067>
- Content Manager OnDemand for z/OS V10.1:  
<http://www.ibm.com/support/docview.wss?uid=swg27051069>
- Content Manager OnDemand for i V7.3:  
<http://www.ibm.com/support/docview.wss?uid=swg27051073>

See the Product documentation section for links to the PDF files as well as a link to the online Knowledge Center. The publications library and Knowledge Center links are also included under the Additional Information heading on the last page of each quarterly newsletter.

### IBM Content Manager OnDemand Education V9.5 and V10.1 updates

You can easily create a Content Manager OnDemand application definition, but do you understand what you're doing? Take Content Manager OnDemand Education when you first install the software or when you have new employees to gain a strong understanding of the fundamentals of the system, how to administer it, and its purpose.

#### Instructor-led

OnDemand University (ODU) instructor-led online training courses from enChoice provide all the benefits of live instruction without the hassle of travel time and costs – students can learn virtually from wherever an internet connection is available.

The following public instructor-led online classes are available for the following weeks in 2018:

- July 30-August 3, 2018
- October 1-5, 2018
- November 12-16, 2018

#### Self-paced

Self-paced online training courses from enChoice are perfect for busy professionals who require flexibility with their class schedules. Classes may be taken anytime, anywhere at the student's own pace. Courses are created and taught in English by certified, IBM-authorized Content Manager OnDemand instructors.

Two self-paced course are available:

#### IBM Content Manager OnDemand Administration

This is the foundation course for individuals interested in learning about the major functions of the Content Manager OnDemand system. The course starts with an overview of the system, and then teaches students how to:

- Create and maintain objects such as applications, application groups, and folders
- Index, load, and retrieve various types of documents and report files

## News (continued)

### IBM Content Manager OnDemand Advanced System Administration

This self-paced course builds on the foundational course by providing system administration concepts for the Content Manager OnDemand solution. It provides students with a thorough understanding of the architecture and system object concepts as well as storage administration, document storage, and indexing components such as the PDF indexer, OS/390 indexer and the XML indexer. The course also covers database configurations, command utilities, server APIs, and the Web Enablement Kit (ODWEK).

To register for any of these classes, visit the [enChoice Education page](#), the [IBM Education website](#), or contact your TechData/Exit Certified, or LearnQuest training coordinator.

Custom or private remote or onsite classes are also available – simply contact [ODU@enchoice.com](mailto:ODU@enchoice.com) for more information.

### Upcoming IBM workshops

If you want to gain actionable insight on how to drive optimal business value from using Content Manager OnDemand, you should attend one of the upcoming IBM Content Manager OnDemand workshops. You will have the opportunity to network with peers and colleagues who face similar challenges and meet industry experts.

Attend these workshops to learn how to satisfy customers through self-service access to bills and statements, govern the content for compliance, and perform advanced analytics on the stored content to gain better insights.

Hear from top Enterprise Content Management Business Leaders and Subject Matter Experts to learn the latest solutions and best practices for enhancing service levels and customer satisfaction, improving operational efficiency, and reducing costs.

Whether new to Content Manager OnDemand or an experienced professional, join us for these two-day workshops.

Registration is open on the [workshop web site](#).

Date	City
Oct 16 - 17, 2018	Phoenix

## Tips – Cross Platform – 10.1.0.3

### Image Viewer available in 64-bit client

The 64-bit OnDemand end-user client supports viewing image data natively at version 10.1.0.3. Previously, the 64-bit client opened all image data in an external viewer.

### HTML5 Line Data Viewer supports Copy page to file

Beginning with Content Manager OnDemand server version 10.1.0.3, the HTML5-based viewer has been enhanced to include the ability to retain a copy of the retrieved document to the browser's local file system. This functionality is accessed by selecting the "Copy pages to file" toolbar button. For more information see [support item 2014928](#).

### ARSDOC command enhanced

The -x loadID and -X loadID parameters are now available when using the ARSDOC UPDATE command.

The -X loadID option can be used to identify all documents in a load. The -x loadID option also identifies all documents in a load but it can be used with the -i sql\_string to identify a subset of the documents in a load. These options are included in ARSDOC UPDATE at V10.1.0.3.

### ARSLSYNC now available for all platforms

Content Manager OnDemand LDAP synchronization (ARSLSYNC), introduced at server version 10.1.0.2 for Multiplatforms, is now available for all platforms. The ARSLSYNC program allows for the synchronization of users and groups between LDAP-compliant directory servers and Content Manager OnDemand.

For more information about LDAP synchronization, see [support item 7050629](#).

### Single Sign-On for IBM Content Navigator

#### What is Single Sign-On?

Single sign-on (SSO) is a session and user authentication service that permits a user to use one set of login credentials (such as user name and password) to access multiple applications. With IBM Content Navigator, an application server (such as WebSphere or WebLogic) can be configured to use one of many different SSO technologies. For example:

- SAML with Tivoli® Federated Identity Manager
- SPNEGO/Kerberos on Oracle WebLogic Server
- SPNEGO/Kerberos on WebSphere Application Server

Leveraging one of these technologies means a user can log into one of the above services and automatically be granted access to IBM Content Navigator.

#### What's new

By leveraging new functionality in Content Manager OnDemand V10.1.0.3 and IBM Content Navigator V3.0.4, you can now implement SSO without the need for custom code. The functionality used to implement SSO in FileNet P8 is now officially supported for Content Manager OnDemand. For customers that run both FileNet P8 and Content Manager OnDemand, you can now have seamless single sign-on across multiple disparate repositories in a single IBM Content Navigator Desktop without the need for customization.

Note: To take advantage of this feature, both the Content Manager OnDemand server and any server running IBM Content Navigator must have Content Manager OnDemand V10.1.0.3 or later installed.

For more information about Single Sign-On, see [support item 0713479](#).

## Tips – OnDemand Administrator client – 10.1.0.3

The features described here require the OnDemand Administrator client version 10.1.0.3 or higher.

### New application columns available in the application list

Customers have requested a quicker way to find the Life of Data and Indexes value for an application. If an application uses a different Life of Data and Indexes value than the application group, it's located on the Advanced Options dialog that is accessible by clicking on the Advanced button from the Miscellaneous Options tab. If an application uses the Life of Data and Indexes value from the application group, the value is located on the Storage Management tab in the application group definition. A change has been made to add the Life of Data and Indexes value as an optional column on the main window of the OnDemand Administrator client.

In addition to adding a column for the Life of Data and Indexes value, other optional columns that contain application attributes are being added. Below is a complete list of the new optional columns.

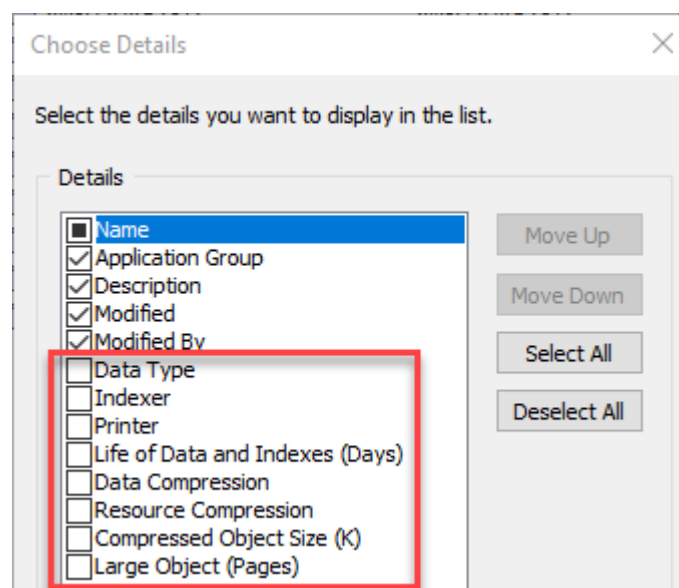
- Data Type
- Indexer
- Printer
- Life of Data and Indexes
- Data Compression
- Resource Compression
- Compressed Object Size (K)
- Large Object (Pages)

Currently, the following columns can be added to/removed from the application list:

- Application Group
- Description
- Modified
- Modified By

With this change, the new columns can also be optionally added and removed.

The default is that none of the new columns are added. If you want to add or remove the new columns, you can select applications in the left pane, click the View menu item, and select Choose Details.



To add the new columns, add a check by the name of the column being added. The location of the column in the list can be changed by selecting the name and clicking the Move Up or Move Down button. Click OK to save the changes. The right pane will contain the updated columns.

The Life of Data and Indexes value will either be the value in the application, or the value in the application group. For example, if the application value is set to "Use Application Group" and the value in the application group is 2555, the column will contain 2555. If the application value is set to 1000, the value in the column will be set to 1000.

As with all other columns, the contents of a column can be sorted in ascending or descending order by clicking the column title.

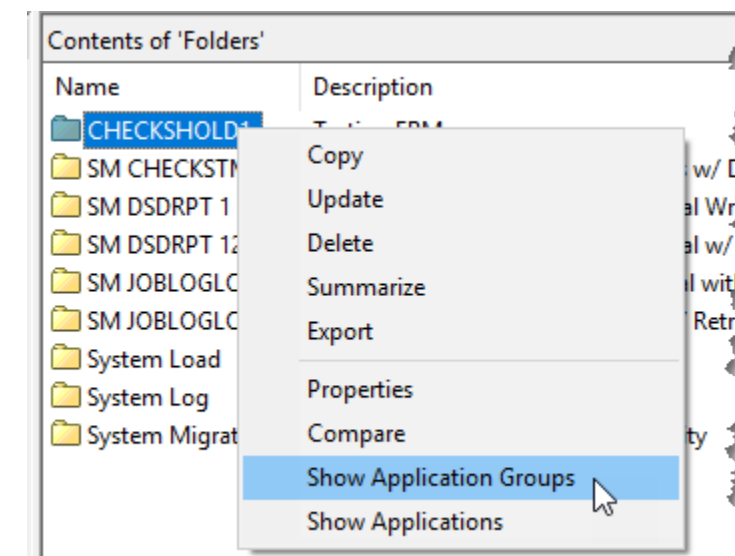
The following example shows the addition of Data Type, Indexer, and Large Object columns:

Data Type	Indexer	Large Object (Pages)	Description
TIFF	Generic		Image
User Defined	Generic		Docu
Line	400		Month
AFP	400		OnDe
PCX	Generic		Images
PDF	PDF		Yearly
Line	400		[TEST
SCS	400	100	Check

The Choose Details dialog will only be available when the server is at V10.1.0.3 or higher. The new columns will be available to add or remove in addition to the columns that existed previously. Any changes will apply to all V10.1.0.3 or higher servers.

### Show Applications and Show Application Groups pop-up menu items for a folder

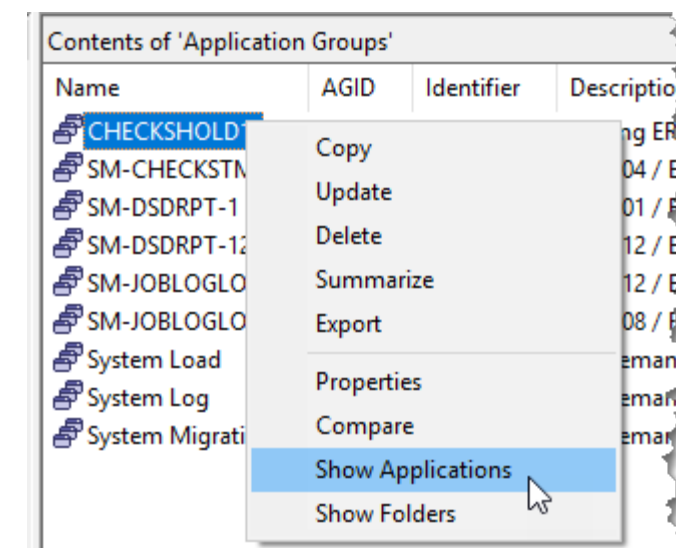
When you right click a folder name, two new options are available: Show Application Groups and Show Applications. Clicking one of these options will display the selected list with only the relevant items included.



This feature works with server version 9.0 and higher.

### Show Applications and Show Folders pop-up menu items for an application group

When you right click an application group name, two new options are available: Show Applications and Show Folders. Clicking one of these options will display the selected list with only the relevant items included.

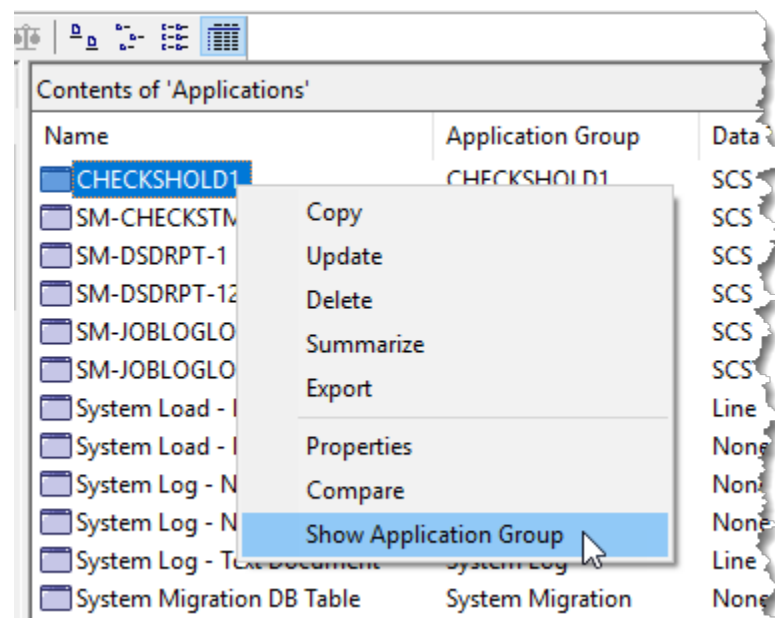


This feature works with server version 9.0 and higher.

## Tips – Multiplatforms

### Show Application Group pop-up menu item for an application

When you right click an application name, a new option is available: Show Application Group. Clicking this option will display the Application Group list with only the relevant item included.



This feature works with server version 9.0 and higher.

### Enhancements to System Parameters Summary

The System Parameters Summary has been enhanced to include information on which Content Manager OnDemand features are enabled for that specific instance, plus the host name and port number. The enhanced summary is available with server version 9.0 and higher. For example:

```
*****
* SYSTEM PARAMETERS SUMMARY *
*****
*** GENERAL ***
SYSTEM LOGGING:          "Login" "Logoff"...
...
*** SERVER INFORMATION ***
HOST NAME:               system.company.com
PORT:                   1450
SERVER VERSION:         10.1.0.3
...
CFS-CMOD ENABLED:       No
ENHANCED RETENTION MANAGEMENT ENABLED: Yes
FULL TEXT INDEX ENABLED: Yes
```

### Root and non-root installs on Unix

#### Introduction

Previously, Content Manager OnDemand could only be installed by a root user. Content Manager OnDemand Version 9.5 and 10.1 allow the installation be performed by non-root users.

When Content Manager OnDemand V9.5.0.0 is installed the very first time by the root user, you can accept the default install location, or select a new location. The default install location is /opt/IBM/ondemand/V9.5. On Linux, the default install location is /opt/ibm/ondemand/V9.5.

Similarly, when Content Manager OnDemand V10.1.0.0 is installed the very first time by the root user, you can accept the default install location, or select a new location. The default install location is /opt/IBM/ondemand/V10.1. On Linux, the default install location is /opt/ibm/ondemand/V10.1.

On subsequent Content Manager OnDemand V9.5 or V10.1 fix pack installs, the install location cannot be changed. A fix pack install requires the base version (9.5.0.0 or 10.1.0.0) be installed first so the fix pack can apply updates to the existing product at the same location.

When Content Manager OnDemand V9.5.0.0 is installed by a non-root user, the install location is fixed to \$HOME/IBM/ondemand/V9.5 or on Linux, \$HOME/ibm/ondemand/V9.5. Similarly, when Content Manager OnDemand V10.1.0.0 is installed by a non-root user, the install location is fixed to \$HOME/IBM/ondemand/V10.1 or on Linux, \$HOME/ibm/ondemand/V10.1.

#### Global and local InstallAnywhere product registries

Content Manager OnDemand installers are based on the InstallAnywhere (IA) engine from Flexera. IA-based installers record the product information in the IA product registry, which is a plain text XML file named .com.zerog.registry.xml.

When the first product based on the IA engine is installed by the root user, the global IA product registry is created under the /var directory. When all products based on the IA engine are uninstalled by the root user, the global IA product registry becomes empty but is not removed.

The global IA product registry is readable by every user. The current implementation of IA also allows it to be writable by all users by default.

When the first product based on the IA engine is installed by a non-root user and the IA global product registry does not exist or not writable by the non-root user, a local IA product registry is created under user's home directory, \$HOME.

If a product based on the IA engine is installed by a non-root user and the IA global product registry exists and is writable by a non-root user, the non-root user installed product will be recorded in the IA global product registry in /var instead. This can create confusion for installed Content Manager OnDemand products in two locations.

#### Best practice

Since Content Manager OnDemand allows both types of installs by root and non-root users to be on a same Unix system, what are the best practices you should follow to manage both types of installs on a single Unix system?

If both installations are to be performed by both root and non-root users on a single Unix system, the Unix system administrator should make sure the root and non-root installs record product information to different IA product registries by making the global IA product registry writable only by root.

As soon as the first installation performed by the root user is completed successfully and the global IA product registry is created, run the chmod command to mark the global IA product registry to be writable only by root. By doing so, installations performed by non-root users will only record product information to local IA product registries. The global IA product registry only contains information from installations performed by the root user.

## Tips – z/OS

### z/OS Quick Hits

#### Upgrading to z/OS soon or installing a new processor?

Be sure to check these threads in the OnDemand User Group forums for the latest updates from Level 2:

##### V2.3:

<http://www.odusergroup.org/forums/index.php?topic=2494.0>

##### V2.2:

<http://www.odusergroup.org/forums/index.php?topic=2058.0>

OAM requirements for an operating system upgrade can be found in the migration manuals:

<https://www.ibm.com/servers/resourcelink/svc00100.nsf/pages/zOSV2R3ga320889?OpenDocument>

or

<http://www.ibm.com/support/docview.wss?uid=isg3T1027685>

#### Upgrading to Content Manager OnDemand V10.1?

Check this thread on the ODUG forum:

<http://www.odusergroup.org/forums/index.php?topic=2252>

Also check the PSP Bucket for any late breaking news from development:

[http://www.ibm.com/support/docview.wss?uid=isg1\\_ODMP10\\_H272A10](http://www.ibm.com/support/docview.wss?uid=isg1_ODMP10_H272A10)

#### Upgrading DB2 to V11 or V12?

##### To V12:

<http://www.odusergroup.org/forums/index.php?topic=2412.0>

##### To V11:

<http://www.odusergroup.org/forums/index.php?topic=1525.0>

## Tips – IBM i

### What sample programs are available?

The following sample programs are shipped with Content Manager OnDemand for i. The sample programs are available in source file QSAMPLES2 in library QRDARS.

**ARO\_PROMPT – CLLE** Use this program to run the Add Report (ADDRPTOND) command from any IBM i Work with Spooled Files display. It uses the UIM Spooled File User-defined List Action Exit. The sample program uses option A to perform the ADDRPTOND action. The ADDRPTOND command is prompted with parameters already filled in. You can change the Application group, Application, Instance, and Start Server parameters as needed before the command is submitted.

The Work with Spooled Files displays include:

Work with Printer Output: WRKSPLF ASTLVL(\*BASIC)

Work with Spooled Files: WRKSPLF ASTLVL(\*INTERMED)

Work with Output Queue: WRKOUTQ <output queue name>

Work with Job Spooled Files: WRKJOB OPTION(\*SPLF)

Work with Spooled File Status: WRKSPLF DSPFMT(\*S36FMT)

**ARSLOG – CLP** Use this program to perform custom functions when messages are written to the System Log. The scope of the System Log exit is global. Note that for the System Log exit to be called, the ARS.CFG file for an instance must either have ARS\_DISABLE\_ARSLOG=0 or not have any entry for ARS\_DISABLE\_ARSLOG.

**CHECKSTMTB – CBLLE** This program is an example of a postprocessor program written in ILE COBOL. The statement account number is used to retrieve the correct account name.

Additional information on postprocessor programs can be found in [support item 7008605](#).

**CHECKSTMTC – C** This program is an example of a postprocessor program written in ILE C. The statement account number is used to retrieve the correct account name.

**CHECKSTMTR – RPGLE** This program is an example of a postprocessor program written in ILE RPG. The statement account number is used to retrieve the correct account name.

**CHGUID – CMD** Command source for changing the UID value for a user profile. Changing the UID is sometimes required when setting up the Archived Storage Manager (ASM) to use Network File System storage. The CHGUSRPRF command cannot do this if the user owns IFS objects. The CHGUID command can.

**CHGUIDC – CLLE** Command processing program for the CHGUID command.

**DIRMONEXIT – CLP** This program is an example of a directory monitor exit. The exit is called by the directory monitor when it processes a file with an application group name or application name equal to this program name. In other words, if a program exists in the monitor's library list that matches the application group name or application name found by the monitor, this program is called. You need a separate program for each application group or application that requires an exit.

Additional information on directory and output queue monitor exits can be found in [V7.3 knowledge center](#).

**PGM123 – CLP** This program is an example of an output queue monitor exit. The exit is called by the output queue monitor when it processes a spooled file with an application group name or application name equal to this program name. In other words, if a program exists in the monitor's library list that matches the application group name or application name found by the monitor, this program is called. You need a separate program for each application group or application that requires an exit.

**QRLMSFAX – CLP** An end-user requesting a server fax causes the QRLMSFAX program to be called, if it exists. This sample program uses the Send Fax (SNDFAX) command of IBM Facsimile Support for i. To use different fax software, you must change and compile the program into QRDARS library.

**UNIDIEXIT – CLLE** This program is an example of a universal directory monitor exit. The universal directory monitor exit is used for all directory monitors, regardless of application group or application name.

In order to use this program as the universal exit for all directory monitors, create data area QRLMMONEXT in the instance library (scope is that instance only) or in library QUSR RDARS (scope is global). The data area type is \*CHAR, with a length of 20. The second 10 bytes contain the universal directory monitor exit program name. The exit program must be found in the library list of the monitor job.

**UNIOUTQEXT – CLLE** This program is an example of a universal output queue monitor exit. The universal output queue monitor exit is used for all output queue monitors, regardless of application group or application name.

In order to use this program as the universal exit for all output queue monitors, create data area QRLMMONEXT in the instance library (scope is that instance only) or in library QUSR RDARS (scope is global). The data area type is \*CHAR, with a length of 20. The first 10 bytes contain the universal output queue monitor exit program name. The exit program must be found in the library list of the monitor job.

## Additional Information

### Knowledge Centers

Content Manager OnDemand for Multiplatforms [Knowledge Centers](#)

Content Manager OnDemand for z/OS [Knowledge Centers](#)

Content Manager OnDemand for i [Knowledge Centers](#)

### Publication Libraries - PDF versions of the documentation

Multiplatform	<a href="#">Version 9.5</a>	<a href="#">Version 10.1</a>
z/OS	<a href="#">Version 9.5</a>	<a href="#">Version 10.1</a>
IBM i	<a href="#">Version 7.2</a>	<a href="#">Version 7.3</a>

### Product System Requirements

Multiplatform	<a href="#">Version 9.5</a>	<a href="#">Version 10.1</a>
z/OS	<a href="#">Version 9.5</a>	<a href="#">Version 10.1</a>
IBM i	<a href="#">Version 7.2</a>	<a href="#">Version 7.3</a>

### More Enterprise Content Management web sites

IBM Content Manager OnDemand [Product Overview](#)

[Compatibility Matrix](#) for the Content Manager OnDemand clients and servers

IBM Content Navigator [Product Overview](#)

IBM Software [Support Lifecycle](#) Policies (search for Content Manager OnDemand)

### Social Media

Follow [@IBM\\_ECM](#) on twitter for almost real-time news & updates on Content Manager OnDemand. For more information and links to all social media sites, see [support item 1673183](#).

### OnDemand User Group

The primary objective of the [OnDemand User Group](#) (ODUG) is to create an environment and network encouraging the exchange and development of information regarding Content Manager OnDemand and its associated products.

### Copyright and trademark information

Linux is a registered trademark of Linus Torvalds in the United States, other countries, or both. Microsoft, Windows, and the Windows logo are trademarks of Microsoft Corporation in the United States, other countries, or both.

Java and all Java-based trademarks and logos are trademarks or registered trademarks of Oracle and/or its affiliates.

A current list of IBM trademarks is available on the Web at "[Copyright and trademark information](#)".